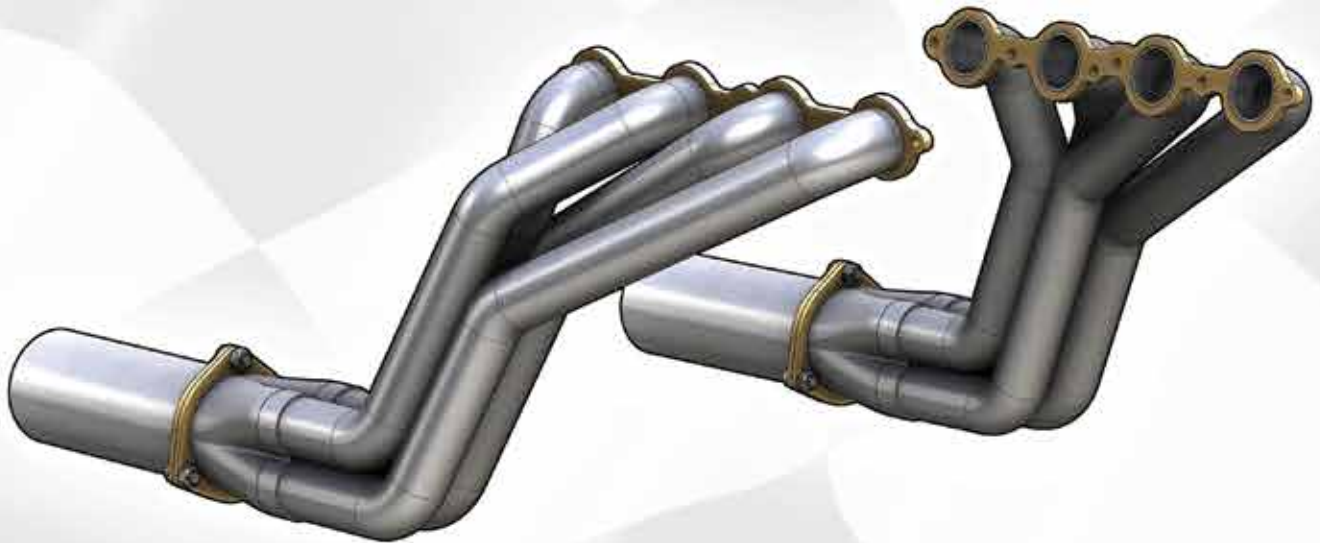


TabZone

CHASSIS COMPONENTS



EXHAUST FLANGE

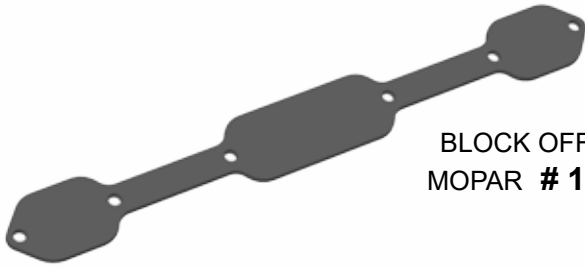
CATALOG



440 MOPAR
12120



VIPER: UP TO '02
#12122-1



BLOCK OFF 440
MOPAR # 12120



VIPER: '03 - '07
#12122-2



5.7L HEMI WITH EGR
12121-1A



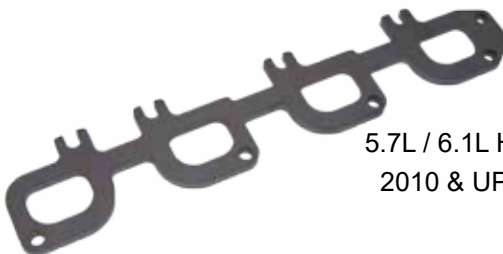
VIPER: '08 AND UP
#12122-3



5.7L HEMI NON EGR
12121-1B



NORTHSTAR V-8
PRE 2001 # 12129-1



5.7L / 6.1L HEMI WITH EGR
2010 & UP # 12121-2A



NORTHSTAR V-8
2001 # 12129-2



5.7L / 6.1L HEMI NON EGR
2010 & UP # 12121-2B



GM 3.8L V-6 SUPERCHARGED
12130-1



GM 4.3L V-6
12127-1



SMALL BLOCK FORD
12133-1



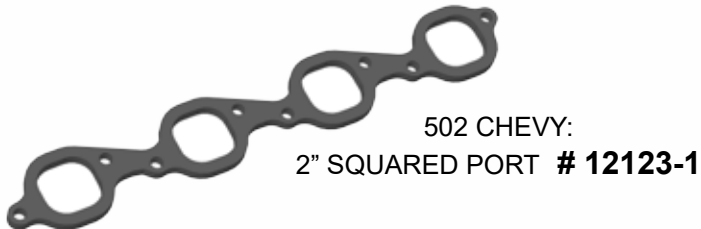
460 FORD
12134-1



428 FORD # 12134-6



SCAT V-4 # 12128-1



502 CHEVY:
2" SQUARED PORT # 12123-1



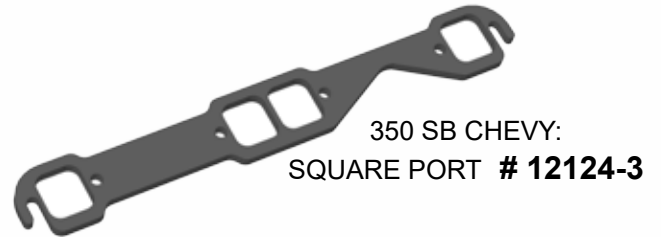
502 CHEVY:
RECTANGLE PORT # 12123-2



350 SB CHEVY 1.625"
12124-1



350 SB CHEVY 1.75"
12124-2



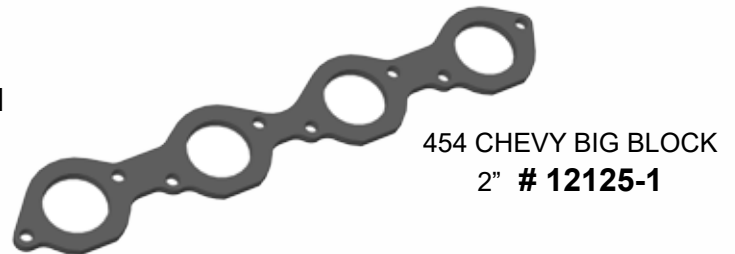
350 SB CHEVY:
SQUARE PORT # 12124-3



350 SB CHEVY 1-3/4" TUBE
12124-5



350 SB CHEVY 1-7/8" TUBE
12124-6



454 CHEVY BIG BLOCK
2" # 12125-1



454 CHEVY BIG BLOCK
2 1/4" # 12125-2



CHEVY - LS1 1-5/8"
12126-1



CHEVY - LS1 1-3/4"
12126-2



SB CHEVY - LS1 1-3/4"
12126-2A



SB CHEVY - LS1 1-7/8"
12126-4



SB CHEVY - LS1 2"
12126-5



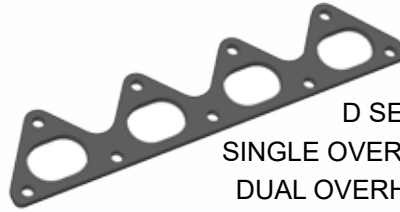
SB CHEVY - LS6
12126-3



SB CHEVY LS1 D PORT
12126-6



V-6 ACURA # 12136-1



D SERIES HONDA -
SINGLE OVERHEAD CAM # 12136-2
DUAL OVERHEAD CAM # 12136-4



MID - LATE 80'S
HONDA V-6 # 12136-3



'97-UP 3.0L V-6
NISSAN # 12137-1



V-6 NISSAN
12137-2



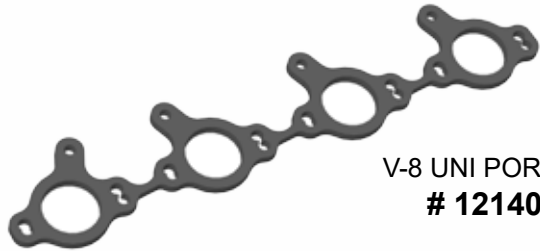
NISSAN V-6 300Z
12137-3



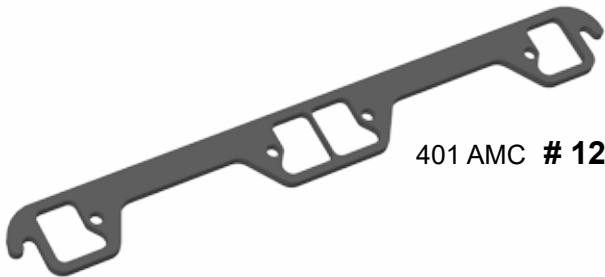
6 CLY TOYOTA CELICA
SUPRA # 12139-1



V-8 PORSCHE
12140-1



V-8 UNI PORSCHE
12140-2



401 AMC # 12142

SUBARU EXHAUST # 12143



WASTE GATE FLANGES
DELTA GATE # 12150-1
TAIL GATE # 12150-2



VW FLANGES
1 1/2" # 12151-1
1 5/8" # 12152-1
1 3/4" # 12153-1




12149-A

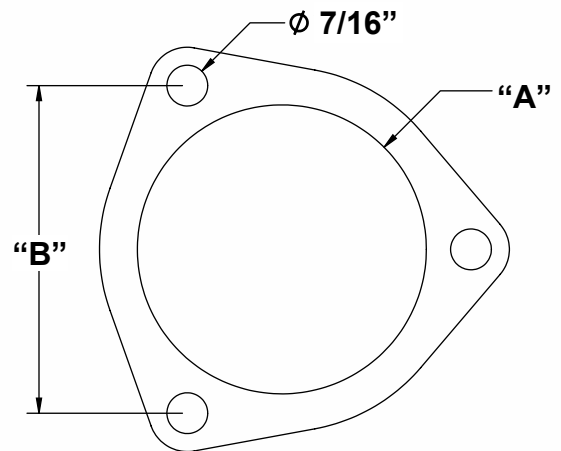


12149-B


HEADER A AND B TABS
ALSO AVAILABLE IN STAINLESS STEEL

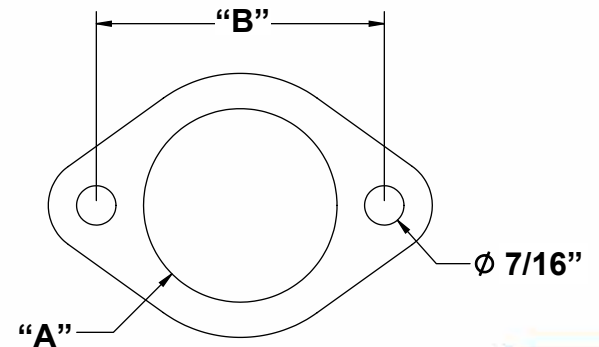
3 BOLT FLANGES

	A	B	PART #
	2"	2.721"	12154-1
	2 1/4"	2.721"	12154-2
	2 1/2"	3.031"	12154-3
	3"	3.412"	12154-4
	3 1/2"	3.863"	12154-5
	4"	4.295"	12154-6



2 BOLT FLANGES

	A	B	PART #
	1 3/4"	3"	12155-1
	2"	3"	12155-2
	2 1/4"	3 1/2"	12155-3

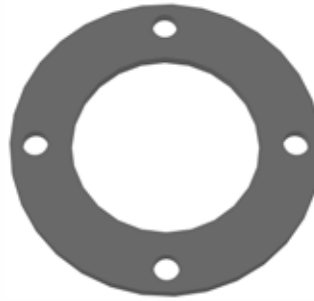




MAZDA SPEED
PROTOGE UPPER
DOWN PIPE **#12188**



95-98 NISSAN SENTRA
TURBO DOWN PIPE
2 1/2" ID **#12189-1**
3" ID **#12189-1**



DISCHARGE FLANGE
#12190



CHRYSLER TURBO
HOUSING INTAKE
FLANGE **#12191-1**



TURBO FLANGE WITH
2 1/16" ROUND HOLE
#12192



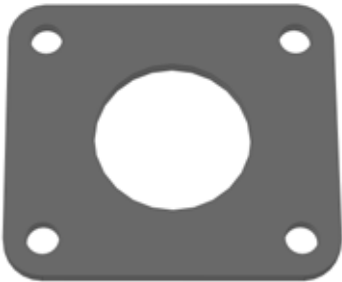
TURBO T-2 **#12193**



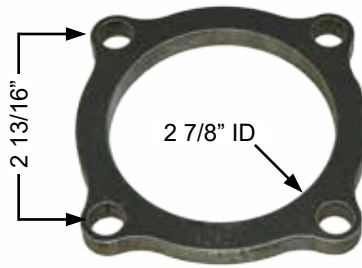
TURBO T-3 **#12194**



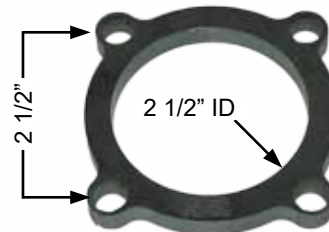
TURBO T-4 **#12195**



TURBO T-4 FLANGE
WITH 2" ROUND HOLE
#12196



SWITZER TURBO
FLANGE **#12197**



TURBO FLANGE
#12198



T-3 DISCHARGE FLANGE
#12196



T-3 DISCHARGE
FLANGE - 3 BOLT
2" ID **#12200-1**
1 5/8" ID **#12200-2**



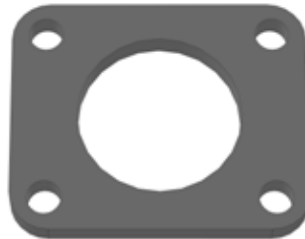
GT 28 FLANGE
#12201



SUBARU DISCHARGE
FLANGE #12202



NISSAN VG-30 #12203



MITSUBISHI TD04
WITH 2" HOLE #12204



DISCHARGE FLANGE
2 7/16" ID 3 BOLT
#12205



GT 35 DISCHARGE
FLANGE #12206



MITSUBISHI TC04
OUTLET #12207-1



MITSUBISHI TC04 INLET
#12207-2



T-28 DISCHARGE FLANGE
#12208



GT-22 DISCHARGE
#12209



GT-12 INTAKE
#12210-1



GT-12 OUTLET
#12210-2



ECOTEC STK EXHAUST
TO MUFFLER
#12211-1

ORDERS: MINIMUM ORDER IS \$25.00 PLUS SHIPPING AND HANDLING

Terms: All orders are to be prepaid prior to shipment. We accept Visa, MasterCard, Discover, and certified checks. Sorry, no C.O.D. orders or personal checks accepted.

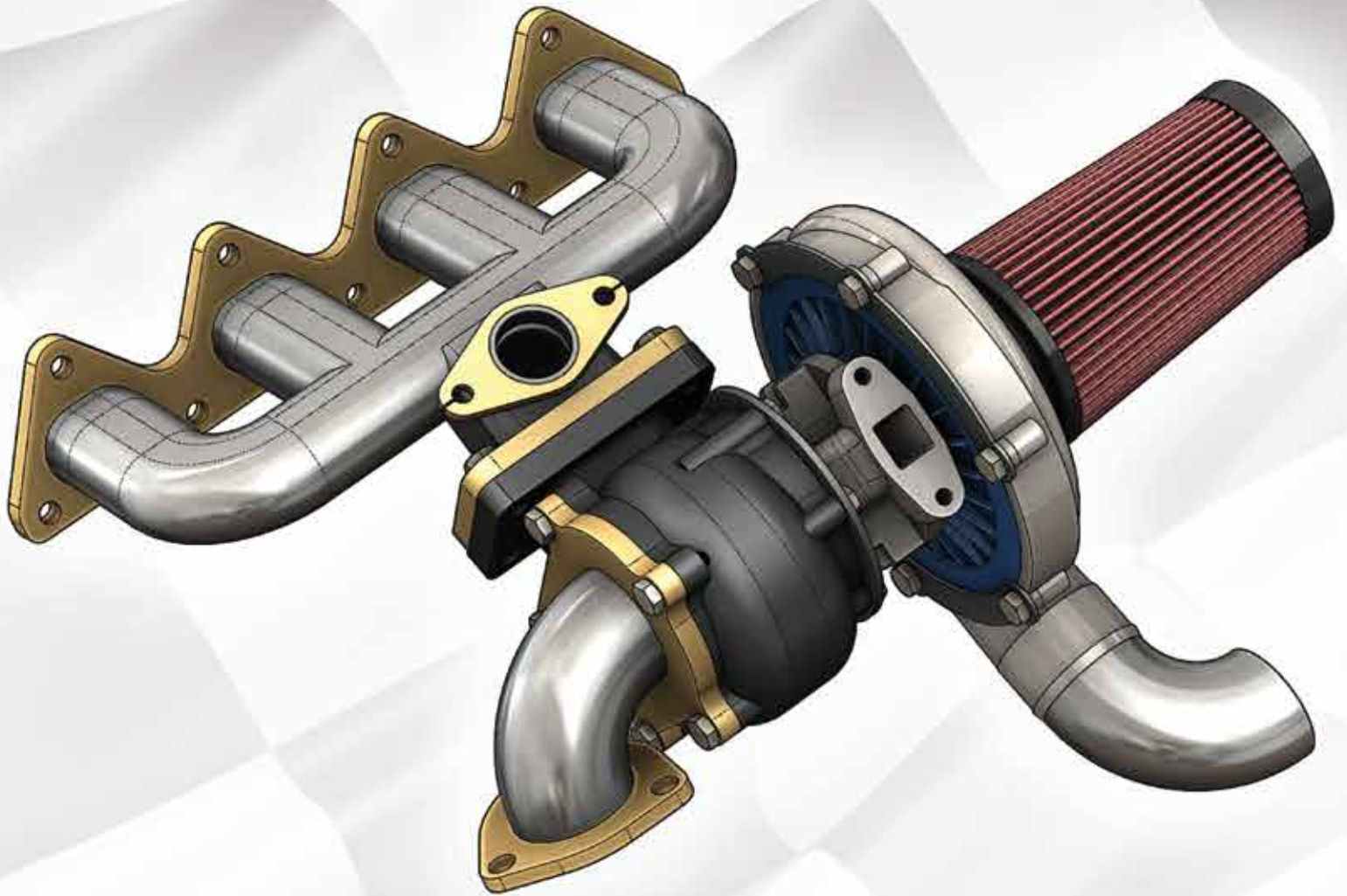
Deposits: A 50% deposit is required on all custom built and special order merchandise. All deposits are non-refundable.

Returns: No returns accepted after 30 days from the invoice date. There will be a **20% RESTOCKING FEE** for any returned goods. No returns on custom built or special order merchandise.

Delivery: All merchandise will be shipped either UPS or truck freight. We ship orders via UPS "ground" unless otherwise specified. Additional fees will be charged accordingly for the additional freight charge.

Claims: Damage claims must be made immediately with the carrier (i.e. UPS). Although every effort is made to ensure that each order is correct & complete, you must inspect contents against packing slip as soon as you receive it. Claims regarding content errors must be reported within 48 hours of receipt of order.

Warranty: These products are intended for **RACING OR OFF-ROAD USE ONLY**. There are **no warranties**, either expressed or implied. Neither the seller nor the manufacturer will be liable for any loss, damage or injury directly or indirectly arising from the use or inability to determine the appropriate use of these products. Before any attempt at using the product, the user shall determine suitability of the product(s) for its intended use and the user shall accept & assume all responsibility and risk.



SCAN FOR WEBSITE



WWW.TABZONE.COM
484 EZ STREET
PRESCOTT, AZ. 86301
PHONE: 928-776-4129

www.tabzone.com